

# Board of Crawford County Commissioners

## Commissioners' Journal

2016, **FIFTH** MEETING

CRAWFORD COUNTY COURTHOUSE, COMMISSIONERS' BOARD ROOM  
Girard, KS **Friday, January 22, 2016, 10:00 AM**

The Crawford County Board of Commissioners met pursuant to Kansas Statutes Annotated Chapter 19, Article 2, Section 18 in due and regular session with open doors. Commissioner Tom Moody served as the presiding officer. Commissioners Carl Wood & Jeff Murphy were in attendance. County Clerk Don Pyle and County Counselor Jim Emerson were seated with the Board. Chairman Moody led the pledge of allegiance.

### **UNDER THE HEADING BUSINESS FROM A PREVIOUS MEETING CONSENT AGENDA**

**On motion (16-029)** of Commissioner Wood and the second of Commissioner Moody that the consent agenda be approved including:

1. Approval of the **January 15, 2016** minutes of the Board of County Commissioners, and
2. Authorizing the Chairman to sign the previous week's vouchers.

Yeas: Commissioners Moody, Wood and Murphy

Nays:

Present but not voting:

Absent or not voting:

**The motion prevailed and the consent agenda was approved.**

### **SIGNING OF MOTIONS**

The County Clerk presented the following motions for Commissioners' signatures:

Motion 16	15	That the consent agenda be approved including: Approval of the January 12, 2015 minutes and Approval of the accounts payable warrant numbers 562412 to 562683 dated January 15, 2016 in the total amount of \$741,968.13
Motion 16	16	To approve the nomination of Commissioner Tom Moody to serve as Chairman of the Board of Crawford County Commissioners for a one-year term commencing immediately
Motion 16	17	To approve the nomination of Commissioner Carl Wood to serve as Vice Chairman of the Board of Crawford County Commissioners for a one-year term commencing immediately

## Board of Crawford County Commissioners

Motion 16	18	To open the Public Hearing on closing and vacating a portion of 7th Street in Chapman Coal Company's Addition to Curranville, Crawford County, Kansas
Motion 16	19	To close the Public Hearing on closing and vacating a portion of 7th Street in Chapman Coal Company's Addition to Curranville, Crawford County, Kansas
Motion 16	20	To adopt Resolution #2016-005, a Resolution closing and vacating a portion of 7 <sup>th</sup> Street located adjacent to and North of Lot 1, Block 3 and South of Lot 10, Block 2 in Chapman Coal Company's Addition to Curranville, Crawford County, Kansas, according to the recorded plat thereof
Motion 16	21	To adopt Resolution #2016-003, a Resolution accepting and granting the amendment of zoning from Agriculture to Rural Residential for the proposed development to be known as Marion Estates
Motion 16	22	To adopt Resolution #2016-004, a Resolution accepting and granting the proposed development known as Marion Estates
Motion 16	23	To accept the recommendations for 2016 rock purchases for Crawford County as recommended by Dennis Meier of Triad Environmental Services and presented by Liz Hart
Motion 16	24	To name the First National Bank of Girard, Exchange State Bank of Girard and Girard National Bank as the official working banks for the business of the taxpayers of Crawford County for a period of one year commencing immediately
Motion 16	25	To name the <i>Pittsburg Morning Sun</i> as the official newspaper publication of Crawford County for a period of one year commencing immediately
Motion 16	26	To recess this open session and go into a closed executive session for a period of not more than 30 minutes to discuss personnel matters involving Non-Elected Personnel and to include the Board of County Commissioners, County Maintenance Supervisor Robert Gorentz and County Counselor Jim Emerson
Motion 16	27	To recess this open session and go into a closed executive session for a period of not more than 30 minutes to discuss personnel matters involving Non-Elected Personnel and to include the Board of County Commissioners, Special Projects Manager Tom Ragonese, Maintenance Supervisor Robert Gorentz and County Counselor Jim Emerson
Motion 16	28	To recess this open session and go into a closed executive session for a period of not more than 15 minutes to discuss personnel matters involving Non-Elected Personnel and to include the Board of County Commissioners and County Counselor Jim Emerson

**UNDER THE HEADING NEW BUSINESS**  
**PUBLIC HEARINGS AND OPENING OF ANNOUNCED BIDS**  
**CRAWFORD COUNTY BOARD OF HEALTH**  
**MESSAGES FROM OTHER GOVERNMENTAL ENTITIES**  
**MESSAGES FROM APPOINTED OFFICIALS**

## Board of Crawford County Commissioners

**Item One:** Mr. Ryan Varsolona, County Appraiser and Mr. Jim Emerson, County Counselor regarding minimum bids for the properties in the Crawford County Tax Sale to be held on January 26, 2016. Mr. Emerson distributed a list of the properties that will be presented in the tax sale that included the legal description of the property and the owners and the amount of back taxes and penalties. Mr. Emerson also stated that the Cities of Pittsburg and Arma have initiated land bank programs and they have asked that the minimum bids for the properties in those cities be set at the amount of back taxes, penalties and assessments that are due on the properties and that if no one bids that amount the cities will use those properties for their community development programs. The Commissioners discussed the properties with Mr. Varsolona and Mr. Emerson and set the minimum bids.

# Board of Crawford County Commissioners

## Tax Sale Information Sheet

No.	Description	Name of Owner Or Parties Claiming Any Interest	Amount Of Taxes, Charges, Interest & Penalties	Minimum Bid
1.	The East Fifty (50) feet of the South Half (S1/2) of Lot Number Four (4) and the East Fifty (50) feet of the North Twenty two (22) feet of Lot Number Five (5) in Block Number One (1) of Arcadia (Arcadia and Railroads), Crawford County, Kansas.	Geneva Sue Ham City of Arcadia	\$4,541.80	\$1,000
3.	Lot Number Ten (10) and the North Five (5) feet Of Lot Number Nine (9), in Block Number Five (5) in East Side Addition to Arcadia, according to the recorded Plat thereof.	Eddie D. Wallace Teresa M. Wallace Alice Wallace New South Federal Savings Bank Southern Mortgage of Missouri, Inc	\$1,909.30	\$1,000
5.	The South One Hundred and Thirty Four and Four Tenths (134.4) feet of Lot Number Five (5) in Block Number One (1) in Jewell's Addition to the City of Arcadia, Kansas, according to the recorded Plat thereof. General Easement in favor of Rural Water District No. 8, Crawford County, Kansas, as shown by Right of Way Easements dated 9/27/1976 and recorded 11/23/1976 in Miscellaneous Record 86, at page 713, in the office of the Register of Deeds of Crawford County, Kansas.	Berry Domer Karen Gordon Sabrina Steward Mike Domer Mildred Ullum	\$3,193.61	\$500.00
6.	Lot Number One (1) in Block Number Eight (8) in South Side Addition to Arcadia, according to the Recorded Plat thereof. General Easement in favor of Rural Water District No. 8, Crawford County, Kansas, as shown by "Right of Way Easement" recorded in Miscellaneous Record 86, at page 713, in the office of the Register of Deeds of Crawford County, Kansas.	Bill H. Buchanan, Jr. Leonora B. Buchanan William L. Reed Dora Lee Reed Ralph Swearingen Sallie Swearingen	\$1,761.49	\$1,000
10.	Lot Number Five (5) in Block Number Thirteen (13) in the Original Town of Rust, now known as the City of Arma, (Crawford County, Kansas), according to the recorded Plat thereof.	Laura A. Warford Justin T. Warford City of Arma, Kansas United States of America	\$26,967.45	
11.	Lots Numbered One (1), Two (2), Three (3), Four (4), Five (5), and Six (6) in Block Numbered Three (3) in the Cherokee Improvement Company's Addition to the Town of Cherokee, Crawford County, Kansas, according to the recorded Plat thereof.	Vernon L. Brooks Louise Brooks Donald Lee Roth Mary Anne Lou-Ella Roth	\$6,139.69	\$500.00
12.	Lots Numbered One (1), and Two (2) in Block Number Four (4) in the Cherokee Improvement Company's Addition to the Town of Cherokee, Crawford County, Kansas, according to the Recorded Plat thereof.	Patricia K. Nowell Girard National Bank Faye Vanderpool Palisades Collection, LLC Terry Lee Nowell	\$156.35	\$1,000
13.	Lots Numbered Seven (7), Eight (8), Nine (9), Ten (10), Eleven (11) and Twelve (12) in Block Numbered Four (4) in the Cherokee Improvement Company's Addition to the Town of Cherokee, Crawford County, Kansas, according to the recorded Plat thereof.	Patricia K. Nowell Girard National Bank Terry Lee Nowell	\$1,619.91	\$1,000

# Board of Crawford County Commissioners

- |     |                                                                                                                                                                                                                                                                                                                                                                                                                                                                                                                                                                                                                                                                                                                                                                                                                                                                                                                                                                                                                                                                                                                                                                                                                                                                                                                                                                               |                                                                                                                                                                                             |                    |                                                                                                                            |
|-----|-------------------------------------------------------------------------------------------------------------------------------------------------------------------------------------------------------------------------------------------------------------------------------------------------------------------------------------------------------------------------------------------------------------------------------------------------------------------------------------------------------------------------------------------------------------------------------------------------------------------------------------------------------------------------------------------------------------------------------------------------------------------------------------------------------------------------------------------------------------------------------------------------------------------------------------------------------------------------------------------------------------------------------------------------------------------------------------------------------------------------------------------------------------------------------------------------------------------------------------------------------------------------------------------------------------------------------------------------------------------------------|---------------------------------------------------------------------------------------------------------------------------------------------------------------------------------------------|--------------------|----------------------------------------------------------------------------------------------------------------------------|
| 14. | <p>Lots Numbered Five (5) and Six (6) in Block Numbered Four (4) in the Cherokee Improvement Company's Addition to the Town of Cherokee, Crawford County, Kansas, according to the recorded Plat thereof.</p>                                                                                                                                                                                                                                                                                                                                                                                                                                                                                                                                                                                                                                                                                                                                                                                                                                                                                                                                                                                                                                                                                                                                                                 | <p>Patricia K. Nowell<br/>Girard National Bank<br/>Palisades Collection, LLC<br/>Terry Lee Nowell</p>                                                                                       | <p>\$5,046.16</p>  | <p>611 E. Magnolia<br/>Cherokee, Kansas</p> <p style="font-size: 1.2em; margin-left: 20px;">\$500.<sup>00</sup></p>        |
| 15. | <p>Lots Numbered Three (3) and Four (4) in Block Numbered Four (4) in the Cherokee Improvement Company's Addition to the Town of Cherokee, Crawford County, Kansas, according to the recorded Plat thereof.</p>                                                                                                                                                                                                                                                                                                                                                                                                                                                                                                                                                                                                                                                                                                                                                                                                                                                                                                                                                                                                                                                                                                                                                               | <p>Patricia K. Nowell<br/>Donald Lee Roth<br/>Palisades Collection, LLC<br/>Mary Anne Lou-Ella Roth<br/>Terry Lee Nowell</p>                                                                | <p>\$159.47</p>    | <p>no address<br/>Cherokee, Kansas</p> <p style="font-size: 1.2em; margin-left: 20px;">\$1.<sup>00</sup></p>               |
| 16. | <p>Part of the South Half (S ½) of Northeast Quarter (NE ¼) of Section Five (5), Township Thirty (30) South, Range Twenty Five (25) East of the Sixth Principal Meridian, Crawford County, Kansas, According to the United States Government Survey thereof bounded and described as follows: Beginning at the Southeast corner of the said Northeast Quarter (NE ¼); Thence North One Thousand Three Hundred Three and Fifty Four Hundredths (1303.54) feet; Thence West One Thousand One Hundred Eight One and Thirty Hundredths (1181.30) feet to the true point of Beginning of the following described tract; Thence South One Hundred Sixty Five (165) feet; Thence West Two Hundred Sixty Four (264) feet; Thence North One Hundred Sixty Five (165) feet; Thence East Two Hundred Sixty Four (264) feet to the point of beginning. Except Mineral reservations of record.</p>                                                                                                                                                                                                                                                                                                                                                                                                                                                                                         | <p>Rapid Acquisition Co., LLC<br/>Ezio Farneti<br/>Mrs. M.B. Patton<br/>Vivian Menichetti<br/>Emil Menichetti<br/>S.I. Patton<br/>Katherine Patton<br/>John T. Hardin<br/>Mollie Hardin</p> | <p>\$1,809.32</p>  | <p>landlocked<br/>Frontenac, Kansas</p> <p style="font-size: 1.2em; margin-left: 20px;">\$1.<sup>00</sup></p>              |
| 18. | <p>Lot Number Nine (9) in the Frontenac Kansas Industrial Park, Crawford County, Kansas, according to the recorded Plat thereof. Except, Mineral Rights and Reservations and rights Incidental thereto as shown by Warranty Deed from The Cherokee and Pittsburg Coal and Mining Company to Frank Zaggar as shown by Warranty Deed recorded by Book 146, at page 185, in the office of the Register of Deeds of Crawford County, Kansas. General Easement for the use of Water Rights as shown by instrument "Water Rights" from Frank Zaggar to the Crawford County in Book 146, at page 185, the office of the Register of Deeds of Crawford County, Kansas. General Easement of 20 feet in width in favor of Rural Water District No. 4, Crawford County, Kansas, as shown by "Easement" recorded in Book 51, at page 1 and 37, respectively, in the office of the Register of Deeds of Crawford County, Kansas. The plat of Frontenac Industrial Park as recorded in Plat Book "N", at page 49, in the office of the Register of Deeds of Crawford County, Kansas. Utility Easement of Twenty (20) feet on the Northeastly side of said Lot as shown by survey by Ronald K. Albertini and on the recorded Plat thereof. Utility Easement of Twenty (20) feet on the West side of said Lot as shown by survey by Ronald K. Albertini and on the recorded Plat thereof.</p> | <p>Frontenac Aluminum LLC<br/>United States of America</p>                                                                                                                                  | <p>\$28,251.00</p> | <p>200 N. Mendicki Drive<br/>Frontenac, Kansas</p> <p style="font-size: 1.2em; margin-left: 20px;">\$500.<sup>00</sup></p> |
| 20. | <p>Part of Lot Number Eleven (11) in Block Number Two (2) in Simon Kotzman's Subdivision of Lots Eleven and Twelve, Highland Addition to Frontenac, according to the recorded Plat Thereof, bounded and described as follows: Beginning at a point Seventy Five (75) feet East of the South West corner of said Lot Number (11);</p>                                                                                                                                                                                                                                                                                                                                                                                                                                                                                                                                                                                                                                                                                                                                                                                                                                                                                                                                                                                                                                          | <p>Jamie S. McLeod<br/>Shelby W. McLeod<br/>Lenders Direct Capital Corp.<br/>Chase Home Finance LLC<br/>City of Frontenac<br/>Stonecrest Income &amp; Opportunity Fund, LLC</p>             | <p>\$11,943.31</p> | <p>203 W. 1st<br/>Frontenac, Kansas</p> <p style="font-size: 1.2em; margin-left: 20px;">\$1.<sup>00</sup></p>              |

# Board of Crawford County Commissioners

Thence North Three Hundred (300) feet; Thence East Fifty (50) feet; Thence South Two Hundred Twenty (220) feet; Thence West Twenty Five (25) feet; Thence South Eighty (80) feet; Thence West Twenty Five (25) feet, more or less to the point of Beginning. Except Mineral reservation of record. Mineral Rights and reservations as recited in Warranty Deed from The Cherokee and Pittsburg Coal and Mining Company to T.P. Waskey and recorded in Book 26, at page 458, in the office of the Register of Deeds of Crawford County.

- |     |                                                                                                                                                                                                                                                                                                                                                                                                                                                                                                                                                                                                                                                                                                                                                                                                                                                                                                                                     |                                                                                                                                                                               |            |        |                                    |
|-----|-------------------------------------------------------------------------------------------------------------------------------------------------------------------------------------------------------------------------------------------------------------------------------------------------------------------------------------------------------------------------------------------------------------------------------------------------------------------------------------------------------------------------------------------------------------------------------------------------------------------------------------------------------------------------------------------------------------------------------------------------------------------------------------------------------------------------------------------------------------------------------------------------------------------------------------|-------------------------------------------------------------------------------------------------------------------------------------------------------------------------------|------------|--------|------------------------------------|
| 24. | West Half (W ½) of Lot Number Seven (7) in Block Number Five (5) in the West Addition to the City of Girard, according to the recorded Plat thereof.                                                                                                                                                                                                                                                                                                                                                                                                                                                                                                                                                                                                                                                                                                                                                                                | Christi Houghton<br>City of Girard                                                                                                                                            | \$5,799.25 | #1, 22 | 519 W. Buffalo<br>Girard, Kansas   |
| 27. | The North Half (N ½) of Lots Numbered Four (4) and Five (5) in Peck's Subdivision of Lot 3 of Perry's Sub-Division of part of the SE ¼ of SW ¼ of SE ¼ of Sec. 24, Twp. 29S, Rg. 23 E. of the Sixth Principal Meridian, Crawford County, Kansas, according to the recorded Plat thereof.                                                                                                                                                                                                                                                                                                                                                                                                                                                                                                                                                                                                                                            | Josephine Hale                                                                                                                                                                | \$514.28   | #1, 36 | ? S. Cherokee<br>Girard, Kansas    |
| 32. | Lots Numbered Thirty Nine (39) and Forty (40) In Block Number Sixteen (16) in The New York Investment Company's "Chaplin Addition to the City of Pittsburg, Kansas", according to the recorded Plat thereof. Except Permanent and Temporary Construction Easement to the City of Pittsburg, Crawford County, Kansas, as shown by "Right of Easement" recorded in Miscellaneous record 84, at page 441, in the office of the Register of Deeds of Crawford County, Kansas.                                                                                                                                                                                                                                                                                                                                                                                                                                                           | Dan Westhoff<br>Daniel J. Westhoff<br>Girard National Bank<br>City of Pittsburg, Kansas<br>Bank One, National Association<br>State of Kansas, Dept. of SRS<br>Starla Westhoff | \$3,032.31 |        | 429 E. 21st<br>Pittsburg, Kansas   |
| 39. | Lot Number Nineteen (19) in Block Number Six (6) in the Hermann Addition to the City of Pittsburg, Crawford County, Kansas, according to the Plat thereof. Except Dedication and Plat as recorded in Miscellaneous Record "E" at page 2, in the office of the Register of Deeds of Crawford County, Kansas.                                                                                                                                                                                                                                                                                                                                                                                                                                                                                                                                                                                                                         | Donald W. Claunch<br>Cleo D. Claunch<br>City of Pittsburg, Kansas                                                                                                             | \$5,337.90 |        | 707 E. 9th<br>Pittsburg, Kansas    |
| 50. | The South Sixty (60) feet of Lots One (1) and Two (2) in Block Ten (10) in Pittsburg Town Company's "Third Addition to the Town of Pittsburg", Crawford County, Kansas, according to the recorded Plat thereof.                                                                                                                                                                                                                                                                                                                                                                                                                                                                                                                                                                                                                                                                                                                     | Carol Gorman<br>City of Pittsburg, Kansas                                                                                                                                     | \$1,364.50 |        | 809 N. Walnut<br>Pittsburg, Kansas |
| 66. | Lot Number Nineteen (19) in Trianon Estates (Part of the Southeast Quarter (SE ¼) and Part of the East ½ of the Southwest Quarter (SW ¼) of the Northeast Quarter of Section 34, Township 28 South, Range 25 East), Crawford County, Kansas, according to the recorded Plat thereof. Except All the Coal, Oil, Gas and Mineral Rights and Reservations as recited in Warranty Deed from the Crawford County Mining Company to Joseph Wilson, recorded in Book 71, at page 268, in the office of the Register of Deeds of Crawford County, Kansas. General Easement in favor of Kansas Gas and Electric Company as shown by "Grant of Right of Way" recorded in Miscellaneous Record "Q", at page 109, in the office of the Register of Deeds of Crawford County, Kansas. General Easement in favor of Rural Water District No. 2, Crawford County, Kansas, as shown by "Right of Way Easement" recorded in Miscellaneous Record 40, | Liana L. Gann                                                                                                                                                                 | \$1,513.09 | #1, 30 | 0 Trianon Rd<br>Mulberry, Kansas   |

# Board of Crawford County Commissioners

at page 367, in the office of the Register of Deeds of Crawford County, Kansas. General Easement in favor of Public Wholesale Water Supply District No. 11, as shown by "Right of Way Easement" recorded in Miscellaneous Record 136, at page 291, in the office of the Register of Deeds of Crawford County, Kansas. Easements for ingress and egress for roadway. There are dedicated easements for streets and they are not maintained by any public entity as shown by Restrictive Covenants filed in Plat Book "N" at page 43, in the office of the Register of Deeds of Crawford County, Kansas. Resolution No. 94-115 filed in Miscellaneous Record 198, at page 386, in the office of the Register of Deeds states that no public roads are dedicated in said plat of Trianon Estates, that any driveway and roadways will be privately constructed and owned, road easements will be the sole responsibility of Trianon Estates Association and that the County takes no responsibility for or obligation to maintain or construct any such driveways or roadways in said Trianon Estates Division.

- |     |                                                                                                                                                                                                                                                                                                                                                                                                                                                                                                                                                                                                                                                                                                                                                                                                                                                                                                                                                                                                                                                                                                                                                                                                                                                                                                                                                                                                                                                                                                                                                                                                           |                                                                             |                                                                       |                                          |
|-----|-----------------------------------------------------------------------------------------------------------------------------------------------------------------------------------------------------------------------------------------------------------------------------------------------------------------------------------------------------------------------------------------------------------------------------------------------------------------------------------------------------------------------------------------------------------------------------------------------------------------------------------------------------------------------------------------------------------------------------------------------------------------------------------------------------------------------------------------------------------------------------------------------------------------------------------------------------------------------------------------------------------------------------------------------------------------------------------------------------------------------------------------------------------------------------------------------------------------------------------------------------------------------------------------------------------------------------------------------------------------------------------------------------------------------------------------------------------------------------------------------------------------------------------------------------------------------------------------------------------|-----------------------------------------------------------------------------|-----------------------------------------------------------------------|------------------------------------------|
| 67. | <p><b>Mineral Rights and Reservations</b> located in Government Lot Number Three (3) (said Lot Three (3) being the same land known as fractional Northwest Quarter Southwest Quarter) and the Northeast Quarter (NE ¼) of the Southwest Quarter (SW ¼) of Section Nineteen (19), Township Twenty Eight (28) South, Range Twenty Five (25) East of the Sixth Principal Meridian, according to the United States Government Survey thereof. Except that part thereof included in Lots Number Five (5), Six (6), Seven (7) and Eight (8) and the Street and Alleys abutting said Lots, in Block Number Twenty Two (22), of the Town of Englevale, according to the recorded Plat thereof. Also Except that part thereof conveyed to Crawford County, in the State of Kansas, by Quit Claim Deed recorded in Book 164 of Deeds, at page 493, in the office of the Register of Deeds of Crawford County, Kansas and bounded and described therein as follows: Beginning at a point 20 ft. East and 133 ft. South of the Northwest corner of the said Southwest Quarter of Section Nineteen (19); Thence East 10 ft.; Thence South 1184 ft., Thence West 10ft., Thence North 1184 ft. to point of beginning. Except General Easement in favor of Rural Water District No. 11, as shown by "Easement" recorded in Book 229, at page 313, in the office of the Register of Deeds of Crawford County, Kansas. General Easement in favor of Rural Water District No. 7, as shown by "Right of Way Easement" recorded in Book 77, at page 42, in the office of the Register of Deeds of Crawford County, Kansas.</p> | <p>Norma J. Chrysler<br/>Arthur A. Stotts<br/>Ted N. Stotts</p>             | <p>\$342.64<br/><br/>severed minerals</p>                             | <p style="text-align: right;">#1, 03</p> |
| 68. | <p>The Surface only of Lots Numbered One (1), Two (2), Three (3), Four (4), Five (5), Six (6), Seven (7), Eight (8), Nine (9), Ten (10), Eleven (11), Twelve (12), ALL in Block Number One (1) ALL IN THE Town on Englevale, Crawford County, Kansas, according to the recorded Plat thereof. Except General Easement in favor of Rural Water District No. 7, Crawford County, Kansas, as shown in "Right of Way Easement" recorded in Miscellaneous Record 69, at page 19, in the office of the Register of Deeds of Crawford</p>                                                                                                                                                                                                                                                                                                                                                                                                                                                                                                                                                                                                                                                                                                                                                                                                                                                                                                                                                                                                                                                                        | <p>Jeffery A. Loyd<br/>Lisa R. Loyd<br/>First State Bank &amp; Trust Co</p> | <p>\$124.50<br/><br/>6?? N. 210<sup>th</sup> Street<br/>Englevale</p> | <p style="text-align: right;">#1, 03</p> |

# Board of Crawford County Commissioners

County, Kansas. Easement in favor of Craw-Kan Telephone Cooperative, Inc., as shown by "Easement Deed" recorded in Book 346, at page 448, in the office of the Register of Deeds of Crawford County, Kansas.

- |     |                                                                                                                                                                                                                                                                                                                                                                                                                                                                                                                                                                                                                                                                                                                                                                                                                                  |                                                                             |                 |                                                     |               |
|-----|----------------------------------------------------------------------------------------------------------------------------------------------------------------------------------------------------------------------------------------------------------------------------------------------------------------------------------------------------------------------------------------------------------------------------------------------------------------------------------------------------------------------------------------------------------------------------------------------------------------------------------------------------------------------------------------------------------------------------------------------------------------------------------------------------------------------------------|-----------------------------------------------------------------------------|-----------------|-----------------------------------------------------|---------------|
| 69. | <p>The Surface only of Lots Numbered Thirteen (13), Fourteen (14), Fifteen (15) and Sixteen (16) ALL in Block Number One (1) ALL in the Town of Englevale, Crawford County, Kansas, according to the recorded Plat thereof. Except General Easement in favor of Rural Water District No. 7, Crawford County, Kansas, as shown in "Right of Way Easement" recorded in Miscellaneous Record 69, at page 19, in the office of the Register of Deeds of Crawford County, Kansas. Easement in favor of Craw-Kan Telephone Cooperative, Inc., as shown by "Easement Deed" recorded in Book 346, at page 448, in the office of the Register of Deeds of Crawford County, Kansas.</p>                                                                                                                                                    | <p>Jeffery A. Loyd<br/>Lisa R. Loyd<br/>First State Bank &amp; Trust Co</p> | <p>\$117.29</p> | <p>6?? N. 209<sup>th</sup> Street<br/>Englevale</p> | <p>157.00</p> |
| 70. | <p>The Surface only of Lots Numbered Seventeen (17), Eighteen (18), Nineteen (19) and Twenty (20) ALL in Block Number One (1) ALL IN THE Town of Englevale, Crawford County, Kansas, according to the recorded Plat thereof. General Easement in favor of Rural Water District No. 7, Crawford County, Kansas, as shown in "Right of Way Easement" recorded in Miscellaneous Record 69, at page 19, in the office of the Register of Deeds of Crawford County, Kansas. Easement in favor of Craw-Kan Telephone Cooperative, Inc., as shown by "Easement Deed" recorded in Book 346, at page 448, in the office of the Register of Deeds of Crawford County, Kansas.</p>                                                                                                                                                          | <p>Jeffery A. Loyd<br/>Lisa R. Loyd<br/>First State Bank &amp; Trust Co</p> | <p>\$116.03</p> | <p>6?? N. 209<sup>th</sup> Street<br/>Englevale</p> | <p>157.00</p> |
| 71. | <p>The Surface only of Lots Numbered One (1), Two (2), Three (3), Four (4), Five (5), Six (6), Seven (7), Eight (8), Nine (9), Ten (10), Eleven (11), Twelve (12) ALL in Block Number Eight (8) ALL in the Town of Englevale, Crawford County, Kansas, according to the recorded Plat thereof. Mineral Rights and Reservations of record. Except General Easement in favor of Public Wholesale Water Supply District No. 11, State of Kansas, dated April 4, 1995 and recorded April 7, 1995 in Miscellaneous Record 213, at page 223 and 225, respectively, in the office of the Register of Deeds of Crawford County, Kansas. Easement in favor of Craw-Kan Telephone Cooperative, Inc., as shown by "Easement Deed" recorded in Book 346, at page 448, in the office of the Register of Deeds of Crawford County, Kansas.</p> | <p>Jeffery A. Loyd<br/>Lisa R. Loyd<br/>First State Bank &amp; Trust Co</p> | <p>\$122.39</p> | <p>6?? N. 210<sup>th</sup> Street<br/>Englevale</p> | <p>157.00</p> |
| 72. | <p>The Surface only of Lots Numbered Thirteen (13), Fourteen (14), Fifteen (15) and Sixteen (16) ALL in Block Number Eight (8) ALL in the Town of Englevale, Crawford County, Kansas, according to the recorded Plat thereof. Mineral Rights and Reservations of record. Except General Easement in favor of Public Wholesale Water Supply District No. 11, State of Kansas, dated April 4, 1995 and recorded April 7, 1995 in Miscellaneous Record 213, at page 223 and 225, respectively, in the office of the Register of Deeds of Crawford County, Kansas. Easement in favor of Craw-Kan Telephone Cooperative, Inc., as shown by "Easement Deed" recorded in Book 346, at page 448, in the office of the Register of Deeds of Crawford County, Kansas.</p>                                                                  | <p>Jeffery A. Loyd<br/>Lisa R. Loyd<br/>First State Bank &amp; Trust Co</p> | <p>\$115.38</p> | <p>6?? N. 209<sup>th</sup> Street<br/>Englevale</p> | <p>157.00</p> |



# Board of Crawford County Commissioners

- |     |                                                                                                                                                                                                                                                                                                                                                                                                                                                                                                                                                                                                                                                                                                                                                                                       |                                                                                             |            |                                              |        |
|-----|---------------------------------------------------------------------------------------------------------------------------------------------------------------------------------------------------------------------------------------------------------------------------------------------------------------------------------------------------------------------------------------------------------------------------------------------------------------------------------------------------------------------------------------------------------------------------------------------------------------------------------------------------------------------------------------------------------------------------------------------------------------------------------------|---------------------------------------------------------------------------------------------|------------|----------------------------------------------|--------|
| 73. | <p>The Surface only of Lots Numbered Seventeen (17), Eighteen (18), Nineteen (19) and Twenty (20) ALL in Block Number Eight (8) ALL in the Town of Englevale, Crawford County, Kansas, according to the recorded Plat thereof.<br/>                 Mineral Rights and Reservations of record. Except General Easement in favor of Public Wholesale Water Supply District No. 11, State of Kansas, dated April 4, 1995 and recorded April 7, 1995 in Miscellaneous Record 213, at page 223 and 225, respectively, in the office of the Register of Deeds of Crawford County, Kansas. Easement in favor of Craw-Kan Telephone Cooperative, Inc., as shown by "Easement Deed" recorded in Book 346, at page 448, in the office of the Register of Deeds of Crawford County, Kansas.</p> | Jeffery A. Loyd<br>Lisa R. Loyd<br>First State Bank & Trust Co                              | \$116.48   | 6?? N. 209 <sup>th</sup> Street<br>Englevale | \$1.00 |
| 75. | <p>Lots Numbered Fourteen (14), Fifteen (15) and Sixteen (16) in Block Number Five (5) ALL in the Town of Drywood (Now known as Farlington), according to the recorded Plat thereof. Except General Easement in favor of Rural Water District No. 7, Crawford County, Kansas, as shown in "Right of Way Easement" recorded in Miscellaneous Record 69, at page 19, in the office of the Register of Deeds of Crawford County, Kansas. Sewer District Resolution No. 98-132 by the Board of County Commissioners recorded June 5, 1998 in Miscellaneous Record 277, at page 444, in the office of the Register of Deeds of Crawford County, Kansas.</p>                                                                                                                                | Jeffery A. Loyd<br>Lisa R. Loyd<br>First State Bank & Trust Co                              | \$3,148.00 | 108 E. Baker<br>Farlington, Kansas           | \$1.00 |
| 80. | <p>Lot Number Six (6) in Block Number Five (5) in the Town of Croweburg, Crawford County, Kansas, according to the recorded Plat thereof. Except Mineral Rights and Reservations as Recited in Warranty Deed from The Western Coal and Mining Company to The J. R. Crowe Coal and Mining Company recorded in Book 68, at page 95, in the office of the Register of Deeds of Crawford County, Kansas. General Easement in favor of Rural Water District No. 3, Crawford County, Kansas, as shown by "Right of Way Easement" recorded in Miscellaneous Record 40, at pages 233 and 367, respectively, in the office of the Register of Deeds of Crawford County, Kansas.</p>                                                                                                            | Shon P. Sturm<br>Barbara E. Sturm<br>The Girard National Bank<br>Delida Brunk<br>M.L. Brunk | \$169.03   | 000 S Fulton<br>Croweburg                    | \$1.00 |
| 83. | <p>Lot Number Two (2) in Markovich Addition to Radley, according to the recorded Plat thereof. Except Mineral Rights and Reservation as recited in Warranty Deed from M.B. Patton and J.S. Patton, her husband to Mary Markovitch, as recorded in Book 60, at page 349, in the office of the Register of Deeds of Crawford County, Kansas. General Easement in favor of Rural Water District No. 2, as shown by "Right of Way Easement" recorded in Miscellaneous Record 41, at page 205 and 346, respectively and Miscellaneous Record 64, at page 347, in the office of the Register of Deeds of Crawford County, Kansas.</p>                                                                                                                                                       | Todd Plouvier<br>Teresa Plouvier                                                            | \$1,327.04 | 0000 E. Radley Ave<br>Radley                 | \$1.00 |
| 84. | <p>Lot Number One (1) in Markovich Addition to Radley, according to the recorded Plat thereof. Except Mineral Rights and Reservation as recited in Warranty Deed from M.B. Patton and J.S. Patton, her husband to Mary</p>                                                                                                                                                                                                                                                                                                                                                                                                                                                                                                                                                            | Todd Plouvier<br>Teresa Plouvier                                                            | \$1,332.54 | 0000 E. Radley Ave<br>Radley                 | \$1.00 |

# Board of Crawford County Commissioners

Markovitch, as recorded in Book 60, at page 349, in the office of the Register of Deeds of Crawford County, Kansas. General Easement in favor of Rural Water District No. 2, as shown by "Right of Way Easement" recorded in Miscellaneous Record 41, at page 205 and 346, respectively and Miscellaneous Record 64, at page 347, in the office of the Register of Deeds of Crawford County, Kansas.

- |     |                                                                                                                                                                                                                                                                                                                                                                                                                                                                                                                                                                                                                                                                                                                                                                                                                                                                                     |                                                                                                                                                                                                                                                                                                                             |                                                              |               |
|-----|-------------------------------------------------------------------------------------------------------------------------------------------------------------------------------------------------------------------------------------------------------------------------------------------------------------------------------------------------------------------------------------------------------------------------------------------------------------------------------------------------------------------------------------------------------------------------------------------------------------------------------------------------------------------------------------------------------------------------------------------------------------------------------------------------------------------------------------------------------------------------------------|-----------------------------------------------------------------------------------------------------------------------------------------------------------------------------------------------------------------------------------------------------------------------------------------------------------------------------|--------------------------------------------------------------|---------------|
| 85. | <p>Lots Numbered Thirty One (31) and Thirty Two (32) in Block Number Six (6) in Patton's 1<sup>st</sup> Addition to Radley, (Crawford County), Kansas, according to the recorded Plat thereof. Mineral Rights and Reservations as shown by Warranty Deed to Anton Koltzman recorded in Book 70 of Deeds, at page 15, in the office of the Register of Deeds of Crawford County, Kansas. General Easement in favor of Rural Water District No. 2, Crawford County, Kansas, as shown in Easement recorded in Miscellaneous Records 41 and 73 at page 347 and 487, respectively, in the office of the Register of Deeds of Crawford County, Kansas. Sewer District as shown by instrument recorded in Book 579, at page 946, in the office of the Register of Deeds of Crawford County, Kansas.</p>                                                                                    | <p>Fredrick E. Bunney<br/>Karen F. Bunney<br/>Calvin Bunney<br/>Janelle Bunney<br/>Commerce Bank, N.A.</p>                                                                                                                                                                                                                  | <p>\$1,364.58<br/><br/>0000 S. Presley<br/>Radley</p>        | <p>\$1.00</p> |
| 86. | <p>Lots Numbered Eighty Seven (87) and Eighty Eight (88) in Frank Benintende Addition to South Radley, (Crawford County), according to the recorded Plat thereof.</p>                                                                                                                                                                                                                                                                                                                                                                                                                                                                                                                                                                                                                                                                                                               | <p>Thomas Robert Harrell</p>                                                                                                                                                                                                                                                                                                | <p>\$4,559.74<br/>525 E. 590<sup>th</sup> Ave<br/>Radley</p> | <p>\$1.00</p> |
| 89. | <p><b>Mineral Reserves Underlying:</b> East Half (E ½) of the Northeast Quarter (NE ¼) of Section Twenty Two (22), Township Thirty (30) South, Range Twenty Four (24) East of the Sixth Principal Meridian, Crawford County, Kansas, according to the United State Government Survey thereof. EXCEPT that part thereof bounded and described as follows: Beginning at the Northwest Corner of the Northeast Quarter (NE ¼) of the Northeast Quarter (NE ¼); Thence South Six Hundred (600) feet; Thence East Nine Hundred (900) feet; Thence Northeasterly Six Hundred fifty (650) feet; Thence West One Thousand Three Hundred Twenty (1320) feet to the point of beginning. Except Easement to Rural Water District No. 4 as shown by "Right of Way Easement" in Book 51, at pages 241 and 37 respectively in the office of the Register of Deeds of Crawford County, Kansas.</p> | <p>Helen M. Blair<br/>Trustee of the Helen M. Blair Revocable Trust<br/>Arthur L. Blair<br/>John H. Blair<br/>William Louis Blair<br/>Susan Blair<br/>Bonnie Jane Blair<br/>Barbara B. Blair<br/>Mary Elizabeth Kumm<br/>Elizabeth Brent Larter<br/>R.B. Larter<br/>Harry B. Kumm<br/>Lorene C. Kumm<br/>James Galloway</p> | <p>\$290.17<br/>severed minerals</p>                         | <p>\$1.00</p> |
| 91. | <p><b>Mineral Reserves Underlying:</b> West Half (W ½) of the Northeast Quarter (NW ¼) of Section Twenty Three (23), Township Thirty (30) South, Range Twenty Four (24) East of the Sixth Principal Meridian, Crawford County, Kansas, according to the United State Government Survey thereof. Rural Water District No. 4 as shown by "Right of Way Easement" in Book 51, at pages 241 and 37 respectively in the office of the Register of Deeds of Crawford County, Kansas.</p>                                                                                                                                                                                                                                                                                                                                                                                                  | <p>Helen M. Blair<br/>Trustee of the Helen M. Blair Revocable Trust<br/>Arthur L. Blair<br/>John H. Blair<br/>William Louis Blair<br/>Susan Blair<br/>Bonnie Jane Blair<br/>Barbara B. Blair<br/>Mary Elizabeth Kumm<br/>Elizabeth Brent Larter<br/>R.B. Larter<br/>Harry B. Kumm<br/>Lorene C. Kumm<br/>James Galloway</p> | <p>\$331.89<br/>severed minerals</p>                         | <p>\$1.00</p> |
| 93. | <p>Lots Numbered One (1) and Two (2) in Block Number Two (2) in "Doan's Addition to the Town of Monmouth", Crawford County, Kansas,</p>                                                                                                                                                                                                                                                                                                                                                                                                                                                                                                                                                                                                                                                                                                                                             | <p>Delayne K. Hashagen<br/>Judy L. Fowler<br/>United State of America</p>                                                                                                                                                                                                                                                   | <p>\$166.21<br/>6?? W. 517<sup>th</sup> Ave<br/>Monmouth</p> | <p>\$1.00</p> |

## Board of Crawford County Commissioners

according to the recorded Plat thereof.

- |     |                                                                                                                                                                                                                                                                                                                                                                                                                                              |                                                                                                                                                                    |                                                      |         |
|-----|----------------------------------------------------------------------------------------------------------------------------------------------------------------------------------------------------------------------------------------------------------------------------------------------------------------------------------------------------------------------------------------------------------------------------------------------|--------------------------------------------------------------------------------------------------------------------------------------------------------------------|------------------------------------------------------|---------|
| 94. | Lots Numbered Three (3), Four (4), Five (5), And Six (6) in Block Number Two (2) in "Doan's Addition to the Town of Monmouth", Crawford County, Kansas, according to the recorded Plat thereof.                                                                                                                                                                                                                                              | Delayne K. Hashagen<br>Judy L. Fowler<br>United State of America<br>Amanda J. Parker<br>Isaac Parker                                                               | \$188.85<br>6?? W. 516 <sup>th</sup> Ave<br>Monmouth | \$1,000 |
| 95. | Lots Numbered Four (4), Five (5), Six (6), Seven (7), Eight (8), Nine (9) and Ten (10) in Block Number Four (4) in the Town of Monmouth, in Crawford County, State of Kansas, according to the recorded Plat thereof.                                                                                                                                                                                                                        | Delayne K. Hashagen<br>Judy L. Fowler<br>United State of America<br>U.G. Sartin                                                                                    | \$257.08<br>686 W. 517 <sup>th</sup> Ave<br>Monmouth | \$1,000 |
| 96. | The North One Hundred Twenty Eight (128) feet of Lots Numbered One (1), Two (2), Three (3), Four (4) and Five (5) in Block Number Eight (8) AND all of Lot Number Six (6) in Block Number Number Eight (8), in the Original Town of Monmouth, Crawford County, Kansas, according to the recorded Plat thereof. Together with the East Half (E ½) of vacated alley adjacent to Lot Number Six (6) in Block Number Eight (8) in said Addition. | Edgar F. Castleman<br>Sarah Ann Leaman<br>A. Lenore Suppe<br>W.S. Leaman<br>C. Flora Leaman<br>Mable Pauline Leaman<br>W.H. Leaman<br>Mabel Davis<br>Flo Castleman | \$183.51<br>6?? W. 517 <sup>th</sup> Ave<br>Monmouth | \$1,000 |
| 97. | Lots Numbered Two (2) and Three (3) in Block Number Nine (9) in the Town of Monmouth, in Crawford County, State of Kansas, according to the recorded Plat thereof.                                                                                                                                                                                                                                                                           | Delayne K. Hashagen<br>Judy L. Fowler<br>United State of America                                                                                                   | \$187.08<br>000 S. 92 <sup>nd</sup> St<br>Monmouth   | \$1,000 |

**On motion (16-030)** of Commissioner Moody and the second of Commissioner Wood to approve the minimum bids for the properties that will be included in the Crawford County Tax Sale on January 26, 2016.

Yeas: Commissioners Kmiec, Moody and Wood

Nays:

Present but not voting:

Absent or not voting:

**The motion prevailed.**

**Item Two:** Mr. Randy Sandberg and Dr. Tim Stebbins with the Crawford County EMS Dept. regarding the use of some of their funds to fund equipment purchases. Mr. Sandberg stated that they operate a training facility for the area and that they want to use the funds that they generate from these training sessions to help pay for the purchases of new and updated equipment for the EMS Dept. There was a discussion of how this program would work and that the EMS Dept. would have to investigate how to price these classes and some other issues that they will encounter.

### MESSAGES FROM THE PUBLIC

### MESSAGES FROM ELECTED OFFICIALS

### PROCLAMATIONS AND ORDERS OF THE BOARD

### NEW BUSINESS

**Item One:** Mr. Don Pyle presenting a Tax Roll Correction correcting an error in the assessing of a 16/20M Truck owned by Chanc Shanholter to request a refund in the amount of \$16.00 and to abate this amount from the 2014 tax rolls. Mr. Pyle explained that the taxpayer traded in the 2003 truck on 10/22/14 which was purchased on 3/1/14 therefore prorating the 2003 truck for 8 months. He also presented a Tax Roll Correction correcting an error in the assessing of a 16/20M Truck owned by Chanc Shanholter to request a refund in the amount of \$54.70 and to abate this amount from the 2014 tax rolls. Mr. Pyle explained that the taxpayer traded in the 2004 truck on 10/22/14 therefore prorating the 2003 truck for 10 months.

# Board of Crawford County Commissioners

<b>Tax Year:</b> 2014	<b>TAX ROLL CORRECTION - TRUCKS</b> AAELT017	<b>Printed by / Date Time</b> grountree 1/28/2016 9:47:13AM
--------------------------	-------------------------------------------------	----------------------------------------------------------------

TaxPayer <u>SHAN00011</u>	System Control # <u>201800013</u>	Tax Year <u>2014</u>
SHANHOLTZER CHANG	User Control # <u>201800013</u>	Doc # <u>57957</u>
1147 W 590TH AVE	TU <u>50</u> GRANT USD 247-H2	
MCCUNE, KS - 66753-8188	Truck Year <u>2004</u>	
Check Payable to: <u>SHANHOLTZER CHANG</u>	Truck VIN <u>1GCGK23U44F241159</u>	
	Description <u>CHEV 2500QAD</u>	

APPRaiser SECTION (Value) Jan 15 2016 2:39PM Danny Grant Approved

Appraised Prior To Correction:			Appraised After Correction:			Net Change
Value	Total		Value	Total		
5,709	5,709		4,758	4,758		-951
Assessed Prior To Correction:			Assessed After Correction:			Net Change
Value	Penalty	Total	Value	Penalty	Total	
1,142	286	1,428	952	0	952	-476
Comment: <u>1-15-16--TRADED IN '04 TRUCK 10-22-14--PRORATE 10 MONTHS IN 2014.</u>						

CLERK SECTION (Tax) Jan 26 2016 9:47AM Gene Rountree-Garcia Order to Print

Tax Prior To Correction:			Tax After Correction:			Net Change
MV Levy	Gen Tax	Total	MV Levy	Gen Tax	Total	
0.115016	164.20	164.20	0.115016	108.50	108.50	-54.70
Comment:						

TREASURER SECTION (Summary)

	Type of Correction	Abate
	Correction Code	NI
	Tax Statement #	31032
Net Change In Assessed Value	-476	
Applicable Motor Vehicle Levy	0.115016	Comments <u>1-15-16--TRADED IN '04 TRUCK 10-22-14--PRORATE 10 MONTHS IN 2014.</u>
Net Change in Total Tax Dollars	-54.70	
Comment:		

By order of the Board of County Commissioners of CRAWFORD COUNTY, Kansas, \_\_\_\_\_ (Date)

Approved by Commission: [Signature]

Attest by County Clerk: [Signature]

# Board of Crawford County Commissioners

Tax Year: 2014	<b>TAX ROLL CORRECTION - TRUCKS</b> AAELT017	Printed by / Date Time grountree 1/19/2016 8:41:16AM
-------------------	-------------------------------------------------	---------------------------------------------------------

TaxPayer <u>SHAN00011</u>	System Control # <u>2016000012</u>	Tax Year <u>2014</u>
<u>SHANHOLTZER CHANG</u>	User Control # <u>2016000012</u>	Doc # <u>57957</u>
<u>1147 W 590TH AVE</u>	TU <u>50</u> <u>GRANT USD 247-H2</u>	
<u>MCCUNE, KS - 66753-6168</u>	Truck Year <u>2003</u>	
Check Payable to: <u>SHANHOLTZER CHANG</u>	Truck VIN <u>2GTEK19T931265379</u>	
	Description <u>GMC SIERRA 1500</u>	

APPRAISER SECTION (Value) Jan 15 2016 2:39PM Danny Grant Approved

Appraised Prior To Correction:			Appraised After Correction:			Net Change
Value	Total		Value	Total		
3,487	3,487		2,789	2,789		-698

Assessed Prior To Correction:			Assessed After Correction:			Net Change
Value	Penalty	Total	Value	Penalty	Total	
697	0	697	558	0	558	-139

Comment: 1-15-16--TRADED IN '03 TRUCK 10-22-14, PURCHASED 3-1-14--PRORATE 8 MONTHS

CLERK SECTION (Tax) Jan 19 2016 8:41AM Gene Rountree-Garcia Order to Print

Tax Prior To Correction:			Tax After Correction:			Net Change
MV Levy	Gen Tax		MV Levy	Gen Tax		
0.115016	80.18		0.115016	64.18		-16.00

Comment:

TREASURER SECTION (Summary)

	Type of Correction	Abate
	Correction Code	NI
	Tax Statement #	31032
Net Change in Assessed Value	-139	
Applicable Motor Vehicle Levy	0.115016	Comments <u>1-15-16--TRADED IN '03 TRUCK 10-22-14, PURCHASED 3-1-14--PRORATE 8 MONTHS</u>
Net Change in Total Tax Dollars	-16.00	

Comment:

By order of the Board of County Commissioners of CRAWFORD COUNTY, Kansas. \_\_\_\_\_ (Date)

Approved by Commission: [Signature]

Attest by County Clerk: [Signature]

# Board of Crawford County Commissioners

D2531-14-000012

## KANSAS DEPARTMENT OF REVENUE STATEMENT OF KANSAS STATE AND LOCAL RETAIL SALES TAX PAID

This is to certify that **CHANC WILLIAM SHANHOLTZER**  
of **MCCUNE, KANSAS** did on **10/22/2014** pay Sales Tax indicated to the undersigned on the  
vehicle described hereon.

Dealer's License No. <u>2531</u>	Sales Tax Account No. <u>004-200938865-01</u>
Make <u>DODGE</u>	Selling Price* (including all accessories & warranties) <u>21875.00</u>
Year <u>2006</u>	See Notes below*
VIN No. <u>1D7KS28C361172805</u>	Less Trade-In(s) <u>13151.00</u>
	VIN Number(s) of Trade-In <del><u>2GTEK19T931265379</u></del>

Is dealership within city limits?  
 Yes  No

**NOTE:** This copy must be delivered by purchaser to county treasurer when application is made for the title and registration or registration transfer. Not to be accepted by treasurer unless entirely completed.

1<sup>st</sup> Copy    Customer Copy  
2<sup>nd</sup> Copy    Dealer's Copy

VIN Number(s) of Trade-In <u>1GCGK23U44F241159</u>	
Cash Difference	<u>8724.00</u>
Sales Tax Paid	<u>645.58</u>
<u>VAIL'S AUTOMOTIVE</u> (Dealer)	<u>2531</u> D#
By: _____	
_____	<u>2262 13000 RD</u>
	Business Location and Address
_____	<u>OSWEGO LABETTE KANSAS 67356</u>
(City)	(County) (State) (Zip)

### NOTES

"Selling Price" is the total amount of consideration, including cash, credit, property and services, for which the vehicle is sold, leased or rented whether received in money or otherwise. "Selling Price" includes the base selling price of the vehicle, all accessories, installation charges, repair charges, any transportation/destination/delivery costs, vehicle preparation fees, VIN Etching, undercoating protection, administrative and/or handling fees, all charges for the federal gas guzzlers tax, warranties, maintenance or service agreements and manufacturer rebates.

The effect of including warranties, maintenance or service agreements in the selling price is that the sale of warranties to nonresidents of the state of Kansas, who will not register the vehicle in Kansas and who will remove the vehicle from the state of Kansas within 10 days of the date of purchase, is that the warranty, maintenance or service agreement, similar to the vehicle itself, is not subject to Kansas retailers' sales tax. Additionally, trade-in allowances will be allowed against the value of existing warranties when trading vehicles.

The following are not to be included in the "Selling Price": interest, financing or carrying charges, GAP- Guaranteed Auto Protection Insurance, registration fees including title fees, federal excise tax on trucks and trailers, mobility enhancing equipment, and Kansas Tire Excise Tax when these are separately stated on the invoice.

**On motion (16-031)** of Commissioner Murphy and the second of Commissioner Moody to approve the Tax Roll Correction correcting an error in the assessing of a 16/20M Truck owned by Chanc Shanholter to request a refund in the amount of \$16.00 and to abate this amount from the 2014 tax rolls and to authorize the Chairman to sign and a Tax Roll Correction correcting an error in the assessing of a 16/20M Truck owned by Chanc Shanholter to request a refund in the amount of \$54.70 and to abate this amount from the 2014 tax rolls and authorize the Chairman to sign.

## Board of Crawford County Commissioners

Yeas: Commissioners Moody, Murphy and Wood

Nays:

Present but not voting:

Absent or not voting:

**The motion prevailed.**

**Item Two:** Mr. Don Pyle presenting the requests for 2016 Parks and Recreation Funding, the 2016 Elderly Funding, the 2016 Historical Funding and the 2016 Special Alcohol Funding. The Commissioners will look these over and review them next Friday.

**Item Three:** Mr. Jim Emerson requesting a transfer of funds from General Fund to the Risk Management fund in the amount of \$15,000.

**On motion (16-032)** of Commissioner Moody and the second of Commissioner Wood to approve the transfer of \$15,000 from the General Fund to the Risk Management Fund.

Yeas: Commissioners Moody, Murphy and Wood

Nays:

Present but not voting:

Absent or not voting:

**The motion prevailed.**

**Item Four:** Mr. Jim Emerson requesting the cancellation of the Crawford County Credit card through Girard National Bank with a credit limit of \$2,500 for Mr. Tom Ragonese who recently retired and to apply for a new one for Maintenance Supervisor Robert Gorentz with the same limits.

**On motion (16-033)** of Commissioner Moody and the second of Commissioner Murphy to approve cancellation of the Crawford County Credit card through Girard National Bank with a credit limit of \$2,500 for Mr. Tom Ragonese and to apply for a new one for Maintenance Supervisor Robert Gorentz with the same limits.

Yeas: Commissioners Moody, Murphy and Wood

Nays:

Present but not voting:

Absent or not voting:

**The motion prevailed.**

**Item Five:** Commissioner Wood regarding some discussions with Greg Hite about some issues with equipment and when to do the work on this equipment.

**Item Six:** Commissioner Wood regarding information on the bridge on Centennial that will be rebuilt east of Pittsburg. Mr. Wood stated that Cyclone Engineering, LLC had recommended that pilings be driven into the ground in connection with this bridge. The Commissioners agreed to keep moving forward with this.

**Item Seven:** Commissioner Wood regarding some discussions with Jim Harms from EMC Insurance. Mr. Wood stated that there will be Defensive Driving Courses on Monday the 25<sup>th</sup> in the afternoon and on Tuesday the 26<sup>th</sup> in the morning. He also stated there will be a meeting on February 8, 2016 at 9:00 AM in reference to the Return to

## Board of Crawford County Commissioners

Work policy with Don Pyle, Jim Emerson, Carl Wood and anyone else interested in attending. Mr. Wood stated he will contact Via Christi and see if they can have a representative that can attend this meeting. There was also a discussion on the policy for reporting work related injuries.

### **UNDER THE HEADING OLD BUSINESS**

**Item One:** Mr. Pyle in reference to registering to Local Government Day in Topeka. Mr. Pyle stated that he will not be in attendance at the Tuesday, January 26, 2016 meeting as he will be in Topeka at meetings. Mr. Murphy also stated he will not be attendance on that day.

**Item Two:** Commissioner Murphy regarding a newsletter that includes some information on Road & Bridge activities in the county. The Commissioners will look over the newsletter and discuss it at next Friday's meeting.



# Board of Crawford County Commissioners

**Board of County Commissioners** Crawford County Courthouse  
PO Box 68  
Girard, Kansas 66743  
  
620-724-6115  
620-724-6007 fax  
www.crawfordcountykansas.org



## Crawford County District Road and Bridge Newsletter 2016

The purpose of this newsletter is providing communication and public awareness for the Crawford County Road and Bridge Department. This newsletter is to communicate some of the work done by the Crawford County Road and Bridge department in 2015.

The Crawford County Road and Bridge Department road crew comprises of 42 personnel total: 10 road grader operators, 3 road foremen, 19 equipment operators/truck drivers, 3 seasonal mower operators, 4 mechanics, 2 sign personnel, and 1 asphalt foreman. The crew is responsible for maintenance the county's 802 miles of gravel road and 283 miles of paved road.

The following are totals showing the work completed in 2015 by the Crawford County road crew:

### 2015 Totals

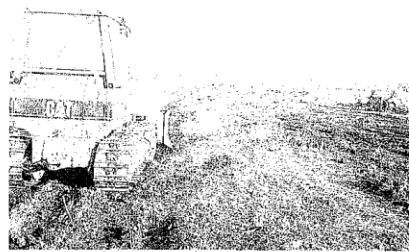
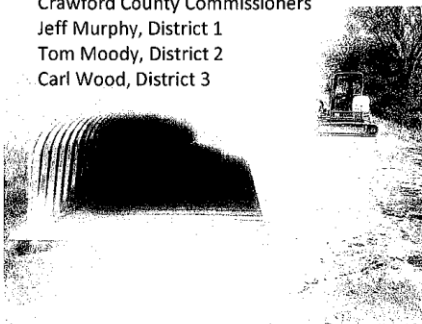
Total number of culverts installed: 192  
Total grader passes (miles graded): 8525  
Total miles of road mowed: 4174  
Total loads of rock hauled: 4887  
Total miles of chip and seal: 30  
Total tons of asphalt laid: 5979

Other work completed by our crew includes rip rap placement, ditching, debris and trash removal, brush clearing, asphalt placement, and chip and seal. In the future, we hope to continue to improve drainage through ditching, improve stream crossings by providing armored crossings, clear brush for improved visibility and drainage, and replace aging bridges. Obviously, those things can only be achieved with enough funding and cooperation from land owners.

We appreciate hearing about concerns or corrections needed on roads. Please contact Liz Hart with the road and bridge department (620-724-8215) about specific issues. We have a significant number of roads to maintain; therefore landowner notifications help our monitoring. We also appreciate knowing about fencing projects adjacent to the right of way, as they may provide opportunities for ditching or brush clearing. Feel free to call with concerns or questions.

Thanks,

Crawford County Commissioners  
Jeff Murphy, District 1  
Tom Moody, District 2  
Carl Wood, District 3



**Item Three:** Commissioner Wood asked about the testing of the machines for the USD 250 Special Question Election. Mr. Pyle stated that the testing will be done on Monday, January 25, 2016 at 1:00 PM and Mr. Pyle stated it was open to the public and a notice was printed in the paper. A discussion was held and Mr. Pyle explained what will take place after the testing on Monday and that he issued a press release to the new media.

## EXECUTIVE SESSION

## Board of Crawford County Commissioners

**Item One:** Commissioner Wood asked for an executive session to discuss personnel matters that involve non-elected personnel.

**On motion (16-034)** of Commissioner Wood and the second of Commissioner Moody to recess this open session and go into a closed executive session for a period of not more than 15 minutes to discuss personnel matters involving non-elected personnel and to include the Board of County Commissioners and County Counselor Jim Emerson.

Yeas: Commissioners Moody, Wood and Murphy

Nays:

Present but not voting:

Absent or not voting:

**The motion prevailed.**

The Commissioners went into Executive Session at 10:55AM and reconvened the Open Session at 11:10 AM with no action taken except to go back into open session.

**Item Two:** Commissioner Murphy asked for an executive session to discuss personnel issues that involve non-elected personnel.

**On motion (16-035)** of Commissioner Murphy and the second of Commissioner Moody to recess this open session and go into a closed executive session for a period of not more than 15 minutes to discuss personnel matters involving Non-Elected Personnel and to include the Board of County Commissioners and County Counselor Jim Emerson.

Yeas: Commissioners Moody, Wood and Murphy

Nays:

Present but not voting:

Absent or not voting:

**The motion prevailed.**

The Commissioners went into Executive Session at 11:10 AM and reconvened the Open Session at 11:25 AM with no action taken except to go back into open session.

### **UNDER THE HEADING FUTURE BUSINESS AND ANNOUNCEMENTS**

#### **FUTURE BUSINESS:**

**Item One: January 29, 2016** – Mr. Brian Coomes, PEC, discussing high risk rural road funding.

#### **ANNOUNCEMENTS:**

**Item One: January 25, 2016, 1:00 PM** – Testing of Optical Scanning Equipment and Processing of Ballots for USD 250 Special Question Election.

**Item Two: January 26, 2016, 2:00 PM** – Crawford County Tax Sale in the District Courtroom in the Crawford County Courthouse in Girard.

**Item Three: January 27, 2016, 4:00 PM** – County Government Day at Capitol Plaza Hotel in Topeka, all three Commissioners may be in attendance.

## Board of Crawford County Commissioners

**Item Four: January 28, 2016, 12:00 PM** – Deadline to receive ballots in the Office of the Crawford County Clerk for the USD 250 Special Question Election.

### **UNDER THE HEADING MOTION TO ADJOURN**

#### **MOTION TO ADJOURN**

**Item One:** Adjournment

**On the motion** of Commissioner Moody and the second of Commissioner Wood to adjourn the [January 22, 2016](#) meeting of the Board of Crawford County Commissioners at 11:28 **PM** and to reconvene at the next regularly scheduled time with open doors.

Yeas: Commissioners Moody, Wood and Murphy

Nays:

Present but not voting:

Absent or not voting:

**The motion prevailed.**

**In Testimony whereof, I have hereunto set my hand and caused to be affixed my official seal and submitted these minutes for the approval of the Board of Crawford County Commissioners.**

---

**Don Pyle**

Crawford County Clerk

◇

**This submission completed at the Crawford County Courthouse in Girard.**

[Taken by DPP 01/22/2016 at 11:28 AM, Amended by DPP 01/22/2016/amended BKW 01/25/2016 1:17 PM](#)